



Phone: (352) 374-5245

Parks and Recreation

The Alachua County Parks Office is responsible for the design, development, and maintenance of the County park system. Additional responsibilities include the administration of state and federal grants, maintenance agreements, management and securities agreements, construction contracts and programmed recreation contracts. The park system consists of 24 parks and the Fairgrounds with a total of 1206 acres and an additional 11 acres of Gainesville Regional Utilities' (GRU) property known as Chapman's Pond.



Florida Co-Champion Live Oak at Cellon Oak Park

Circumference = 360 inches (30 feet)
Average crown spread = 160 feet
Height = 85 feet

MISSION STATEMENT

To provide parks and recreation programs which promote wellness, economic vitality and environmental sustainability for Alachua County's citizens.

PARK AND RECREATION GOALS

To meet our mission, short, intermediate and long term goals have been established as follows:

Short Term (0-2 years)

- Implement a standardized level-of-service for county maintained parks to include frequency of mowing, painting and field chemical applications.
- Continue to improve parks and facilities as approved through the five-year capital improvement projects list including the addition of restrooms to Squirrel Ridge, Lake Alto, Santa Fe Lake and Marjorie Kinnan Rawlings Parks; renovating the Poe Springs Park restroom and Owens-Illinois Park boardwalk and fishing pier.
- Establish a method of tracking park usage (i.e. vehicle counters).
- Utilize technology to document maintenance (i.e. work order system).
- Utilize technology to offer online rentals and accept payments.
- Continuously review and update the Parks and Recreation web page for relevance.
- Implement social media (i.e. Facebook and Twitter) to increase awareness of parks.
- Cultivate private / public partnerships (i.e. leagues, 501(c) 3 groups and other government agencies).
- Implement Parks Ranger positions to provide a clear career path for staff, which focuses on customer service, park related certifications (i.e. Certified Playground Safety Inspector and Certified Parks and Recreation Professional) and cash handling.
- Continuously review fees to increase revenues and offset expenditures.
- Evaluate the Parks Master Plan Regional Trails projects to increase multimodal opportunities in partnership with the Alachua County Environmental Protection Department.
- Implement Energy Conservation Strategies Commission (ECSC) recommendations including:
 - The development of community gardens in parks.
 - The installation of solar panels for park restrooms and other structures.



- The evaluation of other energy conservation measures in parks including reclaimed water for irrigation, waterless urinals, low energy field lighting, green chemicals, recycled paper products, recycled amenities (i.e. picnic tables and benches) and more.
- Work with Solid Waste & Resource Recovery to improve recycling efforts / collection in parks.

Intermediate (3-5 years)

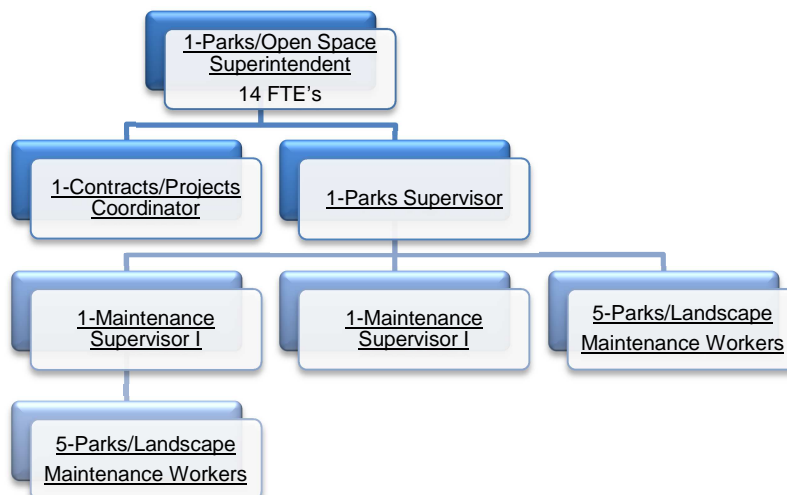
- Implement a differential level-of-service for high use parks including; Rotary Park at Jonesville, Veterans Memorial Park, Poe Springs Park and Alachua County Fairgrounds.
- Review and update the adopted Recreation Master Plan, with input from the Recreation and Open Space Advisory Committee.
- Install edible fruit trees and shrubs in parks.
- Begin implementation of the Regional Trails program.

Long Range (6-10 years)

- Implement the Recreation Master Plan.

PARK AND RECREATION PERSONNEL MATRIX

- Alachua County Park and Recreation Division has 15 full-time employees (FTE's)



COMMUNITY INVOLVEMENT

Alachua County is defined by its high quality of life, progressive ideals and natural beauty. There is a strong spirit of volunteerism, community, and collectivism that strives for a better future. The role of parks and gardens in a community goes beyond the traditional view of parks as just places to play, exercise, relax, and preserve the environment.

- Parks are integral to creating socially, environmentally and economically healthy communities.
- Community gardens increase residents' sense of community ownership and stewardship, provide a focus for neighborhood activities, expose inner-city youth to nature, connect people from diverse cultures, reduce crime by cleaning up vacant lots, and build community leaders.

Recreation and Open Space Advisory Committee (ROSCO)

Mission: The recreation providers of Alachua County will provide services to all people in the most efficient and effective manner.



The Recreation and Open Space Advisory Committee (ROSCO) is a Board of County Commissioners Advisory Committee, which establishes an annual work program; engages in an annual review of the Capital Improvement Project list pertaining to recreation projects; assists and advises on future policies and directions.

- The committee has nine members
 - Seven citizens
 - One City of Gainesville representative
 - One Alachua County School Board representative

COMPLETED AND CURRENT PROJECTS

- Squirrel Ridge Park
 - Construction of a restroom
- Fairgrounds
 - Additional new pole barn completed
- Rotary Park at Jonesville
 - Construction of additional Play System
 - Perimeter soccer field fencing completed

MAINTENANCE, MANAGEMENT AND SECURITY AGREEMENTS

- One Access Control Agreement for Cellon Oak Park
- Maintenance Agreements
 - One Maintenance Agreement for the Veteran's Memorial at Kanapaha Park
 - One Maintenance Agreement for Police Memorial at Kanapaha Park
 - One Athletic Field Maintenance Contract for Veterans memorial Park, Forest Park, and Rotary Park at Jonesville
 - Three Janitorial Maintenance Agreements for the daily cleaning of 12 park restrooms
- Management Agreements
 - One Tennis Complex Management Agreement for Rotary Park at Jonesville
 - One Management Agreement with the North Florida Botanical Society for Kanapaha Botanical Gardens
 - Two Ball Field Management Agreements
 - One for Veterans Memorial Park
 - One for Rotary Park at Jonesville
 - Four Soccer Field Management Agreements
 - One for Cynthia Moore Chestnut Park & Clark Butler Nature Preserve
 - One for Forest Park
 - One for Veterans Memorial Park
 - One for Rotary Park at Jonesville
- One Mowing Contract for mowing all County Parks
- Two Security Agreements providing a mobile home site at two County Parks

COUNTY PARKS

Each one of our parks has their own unique and amazing qualities. We challenge each and every one of you to visit all of Alachua County's parks, learn their history and have some fun.

- For more detailed information about each park, please visit us at:
<http://www.alachuacounty.us/Depts/PW/ParksandRecreation>
- Phone: (352) 374-5245
- E-Mail parks@alachuacounty.us



Phone: (352) 374-5245

ALACHUA COUNTY PARKS

LEGEND: 1 # of facilities available in the park				Ball Field	Basketball	Volleyball	Tennis	Soccer	Roller Hockey	Multi-Purpose Field	Playground	Off-Leash Dog Area	Swimming	Picnic Area	Picnic Shelter	Fitness trail	Nature/Hiking Trail	Nature Study	Fishing	Boat Ramp	Concession	Restroom	Community Center
	PARK	ACRES	TYPE																				
1	Cellon Oak	5.69	Nature															1					
2	Copeland	5.00	Neighborhood	1	1	1					1				1	1							1
3	Cynthia Moore Chestnut Park and Clark Butler Nature Preserve	27.00	Neighborhood		2	1				1	1				1	3		1					1
4	Earl P. Powers	12.47	Special Use Resource								1				1	4		1	1	2			1
5	Forest	23.75	Community		2	2		3				1				2							1
6	Grove	4.32	Neighborhood	1	1						1				1	1							
7	High Springs Boat Ramp	0.25	Special Use Resource																	1			
8	Holden Pond	5.00	Special Use Resource													1				2			
9	Jonesville	87.00	Regional	4			14	6							1	1	1					2	3
10	Kanapaha Botanical Gardens	62.00	Special Use Resource												1	18		1	1				1
11	Kanapaha/Veterans-Chapman's Pond	33.95	Community	1	1	2		2	1		2				1	3	1	1	1			1	1
12	Kanapaha Lake (Undeveloped)	453.37	Nature																				
13	Lake Alto	22.33	Special Use Resource												1	1		1	1	2			
14	Lochloosa	1.24	Special Use Resource												1	1		1	1	2			1
15	McCall (Undeveloped)	78.42	Nature														1	1					
16	Melrose Boat Ramp	0.25	Special Use Resource																	1			
17	M.K. Rawlings	12.00	Special Use Resource								1				1	1		1	1	2			1
18	Monteocha	5.00	Neighborhood	1	1	1					1				1	1							1
19	Owens-Illinois	21.57	Special Use Resource								1				1	1		1	1	2			1
20	Poe Springs	202.47	Regional Resource	1		2					1		1	1	1	4		1	1	1	1	1	3
21	Santa Fe Lake	24.98	Special Use Resource							1	1				1	2		1		2			1
22	Scott-Phifer House	2.80	Historic																				
23	Squirrel Ridge	17.24	Community					1			1	1											
24	Watermelon Pond	12.00	Special Use Resource																1	1			
Total				9	8	9	14	12	1	2	12	2	1	14	45	2	5	11	7	18	3	17	1